



**WORLD ENERGY COUNCIL**  
CONSEIL MONDIAL DE L'ÉNERGIE  
*For sustainable energy.*

# 2014 World Energy Resources Study Group Introduction



# Presentation content

1. World Energy Council – who we are
2. WEC Structure Overview
3. WEC Work Programme Overview
4. Project Background
5. Project Process (methodology)
6. High Level Overview of Activities
7. Participation and Involvement
8. Our Standard Practice
9. Benefits to being a Member of the Study Group
10. Next Steps

## World Energy Council – who we are

# ‘The world energy leaders’ network.’

- ▶ Truly global
  - ▶ Inclusive and impartial
  - ▶ Committed to our sustainable energy future since 1923
- 93 national committees chaired by energy ministers, leading CEOs and practitioners
  - Represents over 3000 government, private sector and experts organisations
  - Flagship event: World Energy Congress, every three years, 2013 in Daegu, South Korea. Next Congress, 2016 in Istanbul, Turkey



# WEC Project Governance

## World Energy Council (WEC)

### Executive Assembly (EA)

WEC Chair  
Secretary General

All-member representative body; the ultimate governing authority of the WEC

### Officers Council (OC)

WEC Chair  
Secretary General

Board of WEC; responsible for overall governance of the organisation

### Studies Committee

Chair, Secretary, Studies Committee Members

Balancing the interests of all stakeholders, providing internal controls and overseeing the management framework. Approves Terms of Reference (ToR) for the respective Study Groups and Knowledge Networks and signs off final work outputs

### Core Team (CT)

Executive Chair, Resources  
Secretary General  
Sen. Director, Scenarios and Policies  
Deputy Director, Scenarios and Resources  
Project Manager (PM)  
Project Coordinator  
Project Partner(s)

Day-to-day project execution in line with the ToRs. The team is responsible for the WEC processes including governance and network, as well as the content management process including the report writing, methodology development and analysis.

### Study Group (SG)

Core Team  
Nominated Experts and members

Provide guidance to the Core Team and Knowledge Networks

### Knowledge Networks (KN)

Lead Authors  
Nominated Experts

Members of the Knowledge Networks participate in meetings and contribute their own expertise, case studies and/or chapters to the project

# WEC Studies

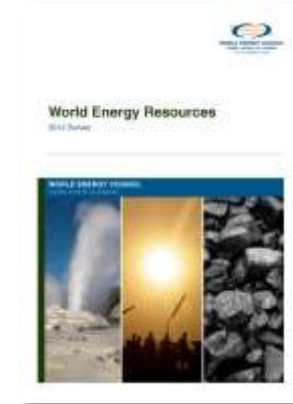
- ▶ **World Energy Scenarios** – exploratory assessments providing a realistic vision of alternative future energy landscapes
- ▶ **World Energy Resources** – surveys the global availability and production of all major energy sources, with national and regional assessments
- ▶ **World Energy Trilemma** – assesses how well countries are addressing the energy trilemma
- ▶ **World Energy Issues Monitor** – assesses the issues on top of the global and regional energy agenda
- ▶ **World Energy Perspectives** – specific issues and technologies

# Project Background

- ▶ The World Energy Resources (WER) is the most well-established WEC flagship.



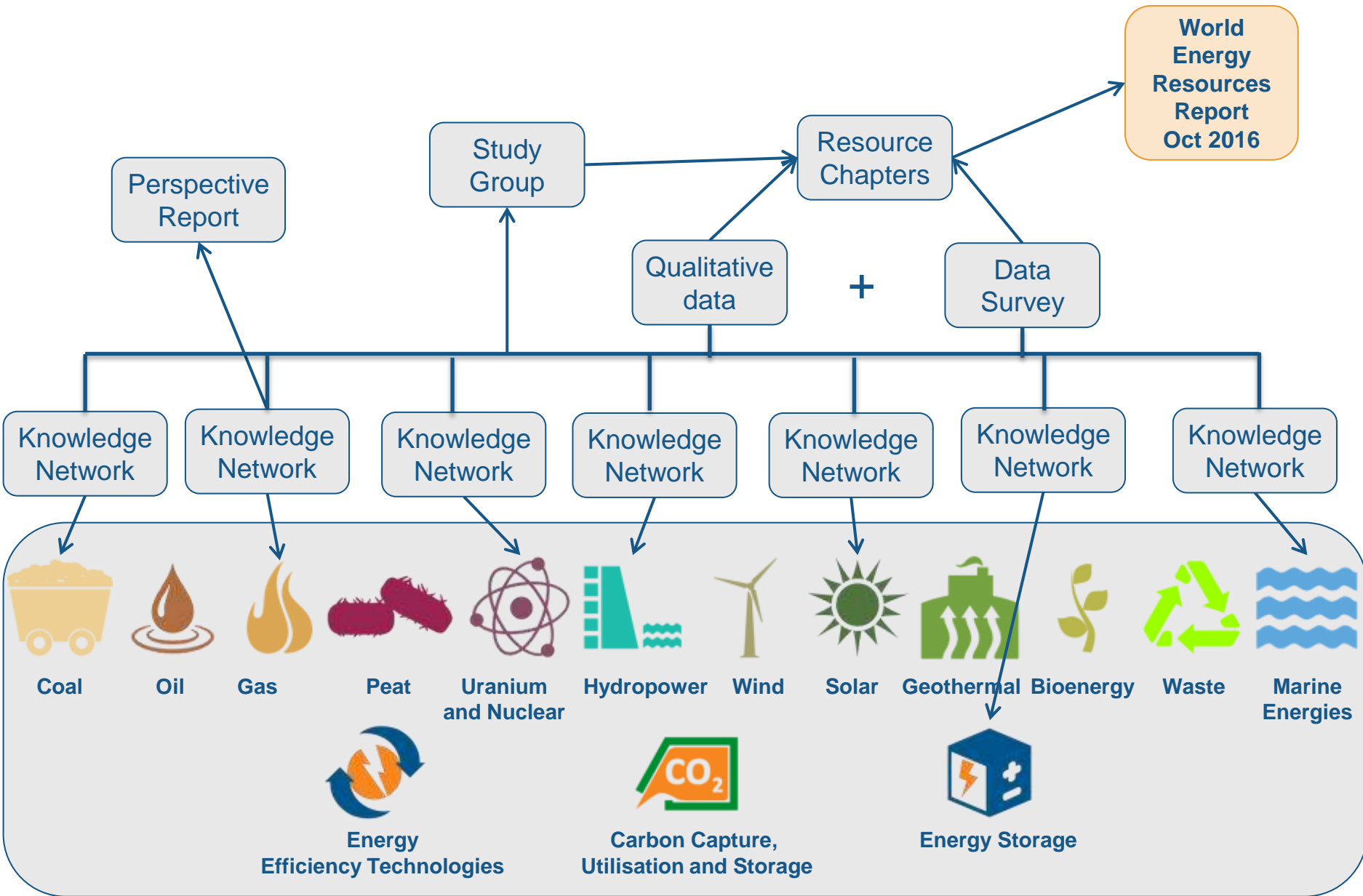
First publication printed in 1936.



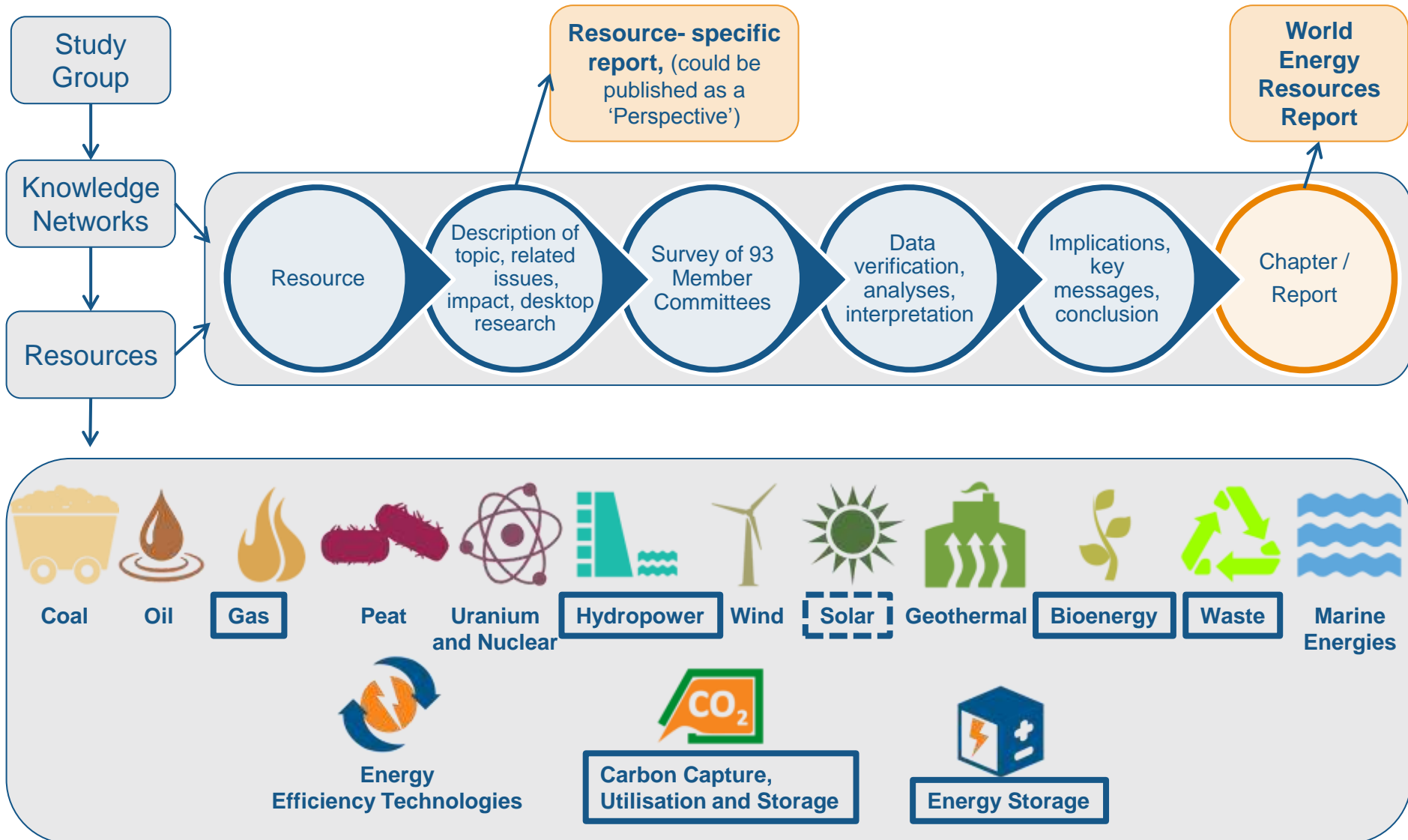
23<sup>rd</sup> edition published at the 22<sup>nd</sup> World Energy Congress in Daegu

- ▶ Latest edition (23<sup>rd</sup>) covered 12 resources with data from over 120 countries.
- ▶ 80 years of experience in delivering authoritative and unique publications, both in terms of individual energy resources and the geographical coverage.
- ▶ With 3 million downloads per year, the WER report is a reference tool for governments, industry, investors, IGOs, NGOs, academia and the general public.

# Project Process Overview (i)



# Project Process Overview (ii)





# Project Process Overview (ii)

## Study Group workshops & meetings

- Discuss key issues, obtain input and agreement on specific topics
- Engage key stakeholders and ensure general buy-in from report users
- Increase the credibility and uniqueness of the reports

## Knowledge Networks

- Group of experts and interested parties focussed on a specific topic
- Undertake research, co-ordinate and compile a Perspective and Resource Chapter

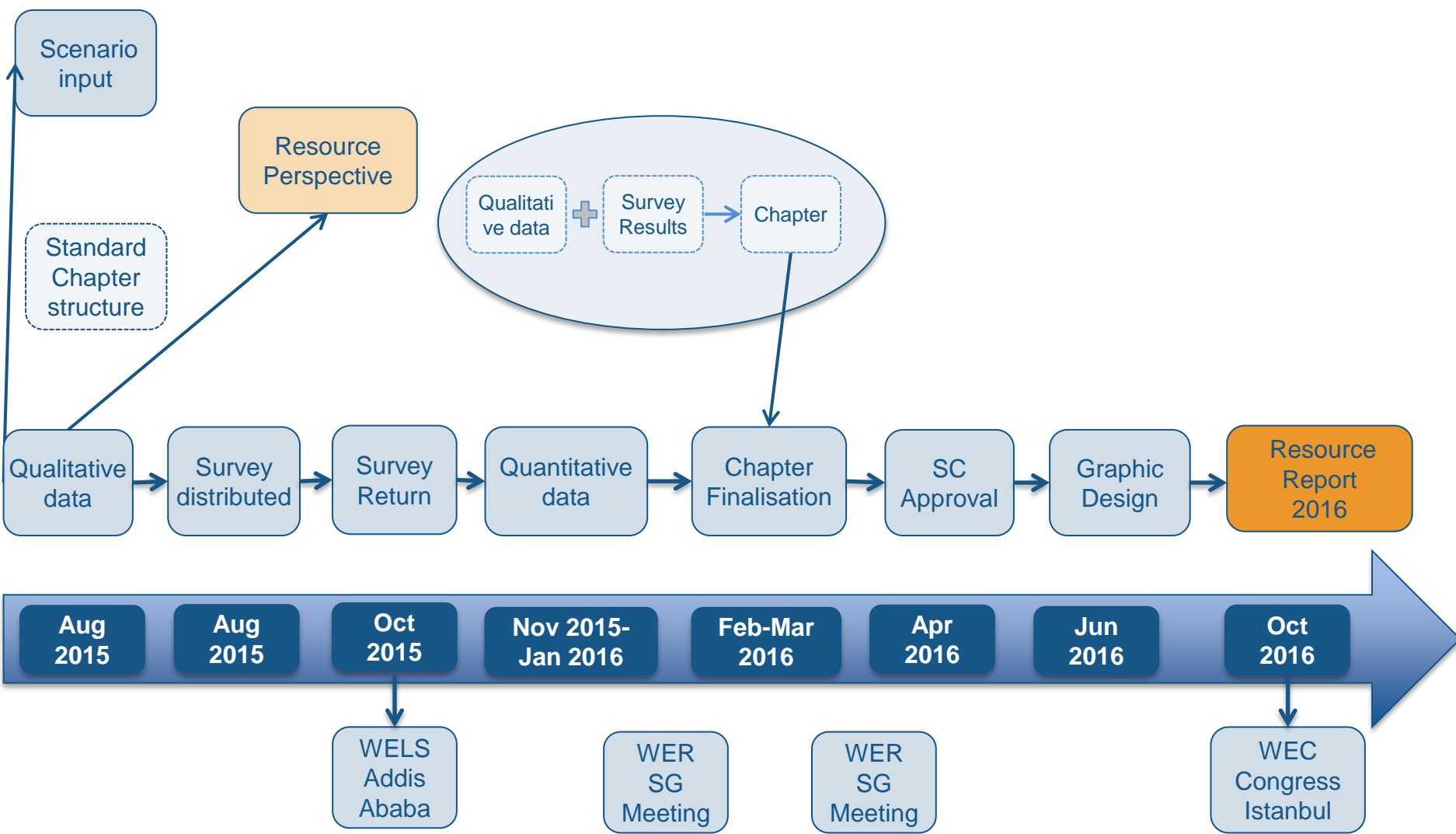
## Desktop Research

- Perspectives (report) and Resource Chapters are supplemented by desktop research, incorporating best practice and relevant examples

## WEC Member Committees

- Ensure MC's concerns and are addressed and interests are taken into account
- Obtain additional information and feedback
- Effective mechanism to quickly exchange information and validate ideas

# Project Process Overview (iii) 2014 – 2016



# High level overview of Knowledge Network

<i>Item</i>	<i>Suggested dates</i>	<i>Action items</i>
<i>Kick-off meeting</i>	<i>Aug 2015</i>	<i>Introductions, overview, work plan</i>
<i>Finalise scope &amp; project plan, allocation of work</i>	<i>Aug 2015</i>	<i>Group call, brainstorm, mind map, work allocation</i>
<i>Follow-up on progress</i>	<i>Sep 2015</i>	<i>KN call and e-mails</i>
<i>First draft</i>	<i>Sep 2015</i>	<i>Collation of information, compile &amp; distribute draft for comments</i>
<i>Review process &amp; filling gaps</i>	<i>Oct 2015</i>	<i>Distribute, review &amp; incorporate comments</i>
<i>Second draft</i>	<i>Nov 2015</i>	<i>KN call &amp; allocate additional work</i>
<i>Review info from survey and supplement with data and country notes</i>	<i>Dec - Jan 2016</i>	<i>KN call &amp; allocate work</i>
<i>Compile Resources Chapter (data analysis)</i>	<i>Jan – Mar 2016</i>	<i>KN call &amp; allocate work, verify data</i>
<i>Resources report governance process</i>	<i>Mar – Apr 2016</i>	<i>Collate info and compile report</i>
<i>Governance process Approval by Studies Committee</i>	<i>Apr 2016</i>	<i>Distribute and collate &amp; review comments</i>
<i>Incorporate suggested changes</i>	<i>May 2016</i>	<i>KN call, allocate additional work, compile final report</i>
<i>Graphic design &amp; publishing</i>	<i>Jun-Jul 2016</i>	

# Your Participation and Involvement

## ▶ Roles and responsibilities in the development of the World Energy Resources




**The Resources Study Group (SG)** consists of nominated Member Committee representatives organised into Knowledge Networks, an Executive Chair and the Core Team.

SG members commit to regular, prepared participation in meetings and to support outreach activities to their own stakeholders / network where possible.

Study Group (SG)

Giving project support which includes providing feedback on key conclusions, recommendations, messages, and drafting reports, contributing to knowledge networks.



**The Knowledge Networks (KN)** are responsible for compiling the respective reports that form the chapters of the World Energy Resources Report.

Each KN consists of a Lead Author, responsible for managing the output of the KN, and experts, who are to deliver information upon Lead Authors request. The exact number of experts per group varies and remains under Executive Chair's discretion.


Knowledge Network (KN)



**The Executive Chair** serves as the public spokesperson for the World Energy Resources.

The Executive Chair leads the work of the SG within the bounds of the Terms of Reference and is responsible to the Studies Committee Chair for ensuring that the work is completed on time and meets expectations.

Executive Chair



**The Core Team** is responsible for the project plan, co-ordination of work, liaison with members, dissemination of information, support WEC events and communication and use of Resources Report. The team will also compile various versions of the report leading to the final version.

The Core Team consists of the WEC Secretary General, the World Energy Resources Executive Chair, the Senior Director, Scenarios and Policies, Deputy Director, Scenarios and Resources, the Senior Project Manager and Project Coordinator. Additionally, project partners may second their members.

Core Team

# Our Standard practice

You will be a member or Lead author of a specific Knowledge Network and contribute towards the work according to the agreed timeline.

The individual Knowledge Networks meet 4-6 times per year, either physically and/or virtually.

- ▶ Kick-off meeting, allocation of work, determine timelines, lead author
- ▶ KN: Usually there are 4 to 8 KN conference calls and 1 to 3 meetings per year
- ▶ SG: 1-2 Conference calls per year and 1-2 physical meetings per year
- ▶ Meeting materials and dial-in information are circulated a few days prior to the meeting. Please review the material before the meeting
- ▶ SG meetings are facilitated by the Executive Chair, Resources. Work progress and content will be presented by the Lead authors and Core Team members as appropriate
- ▶ Study Group members are invited to comment on the proposals made by the Knowledge Networks and contribute to the development of the content where appropriate

# Benefits to being a Member of the Study Group

- ▶ Increased knowledge and experience in developing scenarios and their application in decision making, developing and testing strategies
- ▶ Increased understanding and appreciation of the interdependent relationship between various forms and resources of energy and macro external environment factors
- ▶ Opportunity to help influence and shape debates and policy on global energy issues
- ▶ Exposure to different viewpoints from various world regions, companies and countries
- ▶ Formal and informal exchange of ideas and knowledge
- ▶ Exposure to the WEC membership and contact with industry peers
- ▶ Networking opportunities and meeting industry experts
- ▶ Attendance of various WEC events and activities
- ▶ Access to the scenario GMM model, as well as various studies, data and resources of the WEC
- ▶ The Study Group members will be recognised in the final report